

Memory Module Specifications

KSM29RS8/8MRR

8GB 1Rx8 1G x 72-Bit PC4-2933

CL21 Registered w/Parity 288-Pin DIMM

DESCRIPTION

Kingston's KSM29RS8/8MRR is a 1G x 72-bit (8GB) DDR4-2933 CL21 SDRAM (Synchronous DRAM) registered w/ parity, 1Rx8, ECC, memory module, based on nine 1G x 8-bit FBGA components. The SPD is programmed to JEDEC standard latency DDR4-2933 timing of 21-21-21 at 1.2V. Each 288-pin DIMM uses gold contact fingers. The electrical and mechanical specifications are as follows:

FEATURES

- Power Supply: VDD = 1.2V
- VDDQ = 1.2V
- VPP = 2.5V
- VDDSPD = 2.41V to 2.75V
- Functionality and operations comply with the DDR4 SDRAM datasheet
- 16 internal banks
- Bank Grouping is applied, and CAS to CAS latency (tCCD_L, tCCD_S) for the banks in the same or different bank group accesses are available
- Data transfer rates: PC4-2933, PC4-2666, PC4-2400, PC4-2133, PC4-1866, PC4-1600
- Bi-Directional Differential Data Strobe
- 8 bit pre-fetch
- Burst Length (BL) switch on-the-fly BL8 or BC4(Burst Chop)
- Supports ECC error correction and detection
- On-Die Termination (ODT)
- Temperature sensor with integrated SPD
- This product is in compliance with the RoHS directive.
- Per DRAM Addressability is supported
- Internal Vref DQ level generation is available
- Write CRC is supported at all speed grades
- CA parity (Command/Address Parity) mode is supported

SPECIFICATIONS

CL(IDD)	21 cycles
Row Cycle Time (tRCmin)	46.32ns(min.)
Refresh to Active/Refresh Command Time (tRFCmin)	350ns(min.)
Row Active Time (tRASmin)	32ns(min.)
Maximum Operating Power	*
UL Rating	94 V - 0
Operating Temperature	0° C to +85° C
Storage Temperature	-55° C to +100° C

*See IDD Specifications (page 2)

Module Assembly

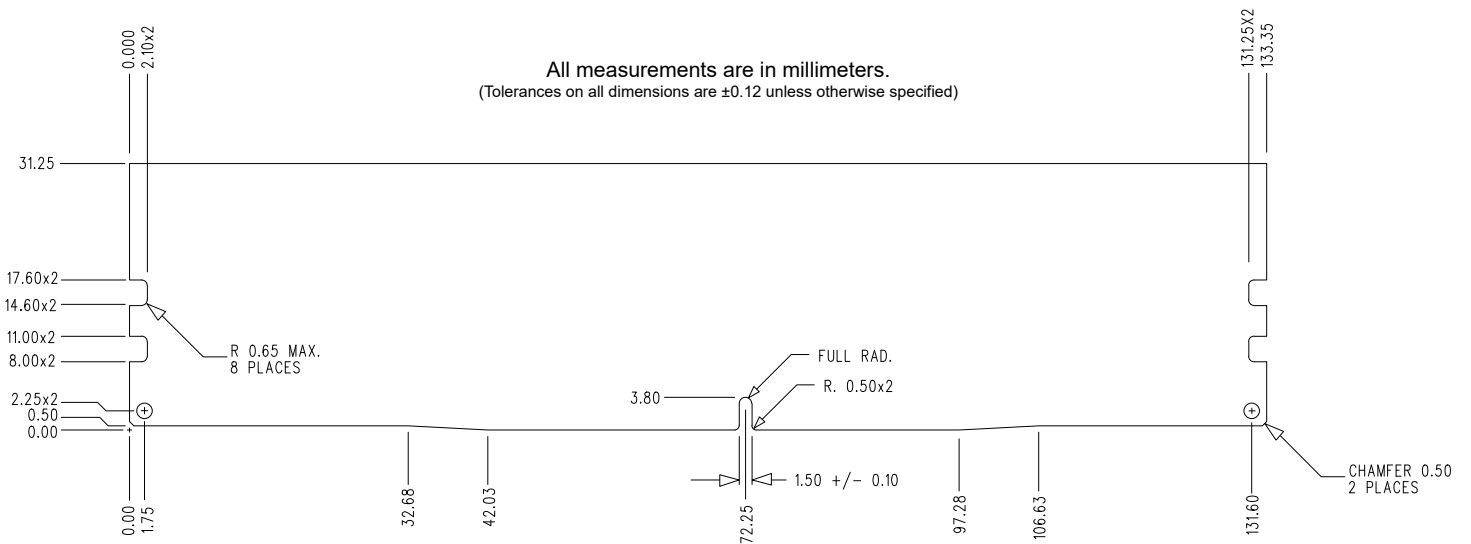
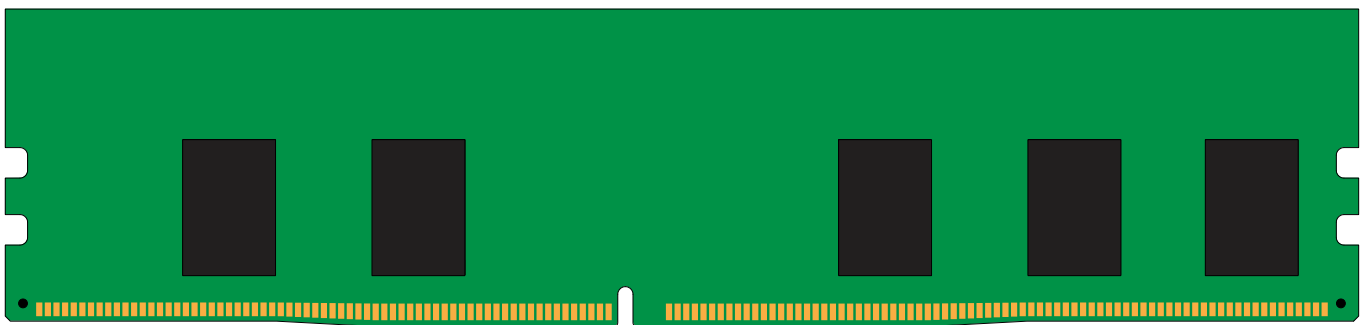
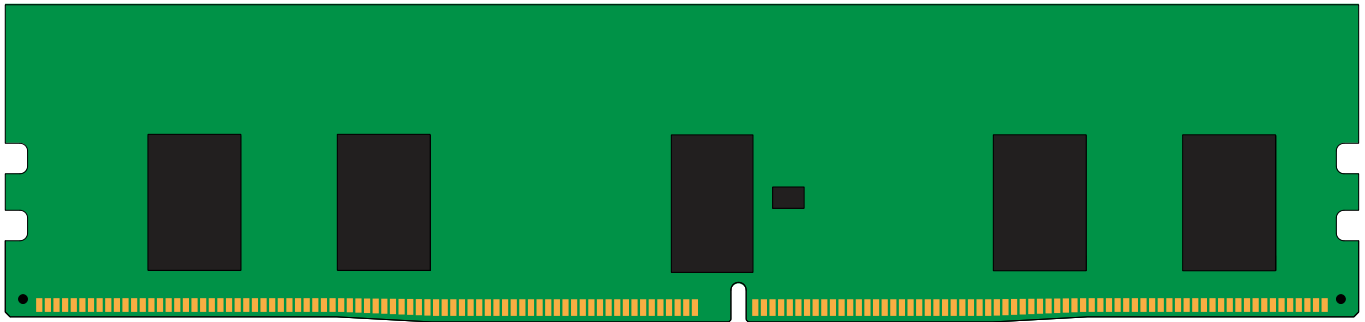
DRAM: MICRON (R-DIE)
RCD: Rambus

Continued >>

IDD Specifications

Symbol	2933	Units
I _{DD0}	414	mA
I _{PP0}	36	mA
I _{DD1}	477	mA
I _{DD2N}	333	mA
I _{DD2NT}	351	mA
I _{DD2P}	270	mA
I _{DD2Q}	306	mA
I _{DD3N}	369	mA
I _{PP3N}	27	mA
I _{DD3P}	288	mA
I _{DD4R}	1017	mA
I _{DD4W}	882	mA
I _{DD5R}	414	mA
I _{PP5R}	45	mA
I _{DD6N}	288	mA
I _{DD6E}	468	mA
I _{DD6R}	171	mA
I _{DD6A}	72	mA
I _{DD6A}	171	mA
I _{DD6A}	261	mA
I _{DD6A}	468	mA
I _{PP6X}	45	mA
I _{DD7}	1350	mA
I _{PP7}	72	mA
I _{DD8}	216	mA

MODULE DIMENSIONS



The product images shown are for illustration purposes only and may not be an exact representation of the product.
Kingston reserves the right to change any information at anytime without notice.