

# Memory Module Specifications

## KSM48T40BS8KM-16HM

16GB 1Rx8 2G x 72-Bit

PC5-4800 CL40 262-Pin ECC SODIMM

### DESCRIPTION

Kingston's KSM48T40BS8KM-16HM is a 2G x 72-bit (16GB) DDR5-4800 CL40 SDRAM (Synchronous DRAM) w/ parity, 1Rx8, ECC, memory module, based on ten 2G x 8-bit FBGA components. The SPD is programmed to JEDEC standard latency DDR5-4800 timing of 40-39-39 at 1.1V. Each 262-pin SODIMM uses gold contact fingers. The electrical and mechanical specifications are as follows:

### FEATURES

- Power Supply: VDD = 1.1V Typical
- VDDQ = 1.1V Typical
- VPP = 1.8V Typical
- VDDSPD = 1.8V to 2.0V
- On-Die ECC
- x72 ECC (x36, 2 independent I/O sub channels)
- 32 internal banks
- Hard/Soft Post Package Repair
- Sideband access with I3C/I2C
- PCB: Height 1.23" (31.25mm)
- RoHS Compliant and Halogen-Free

### SPECIFICATIONS

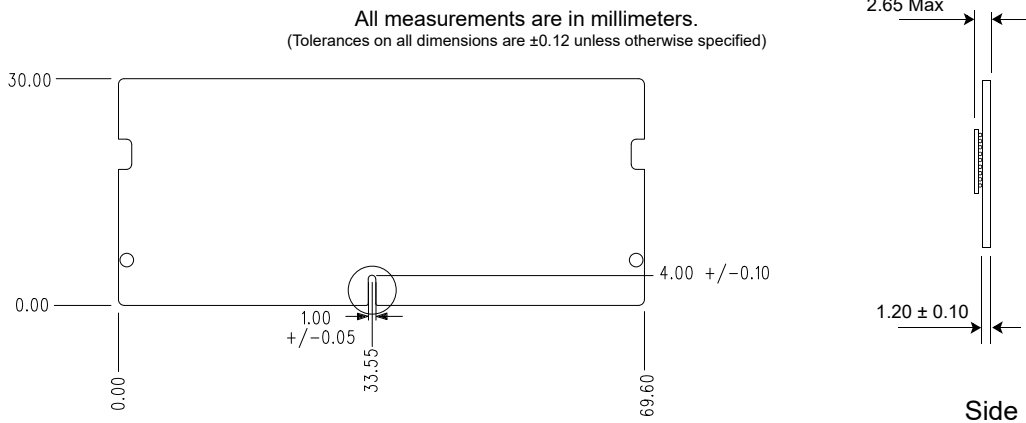
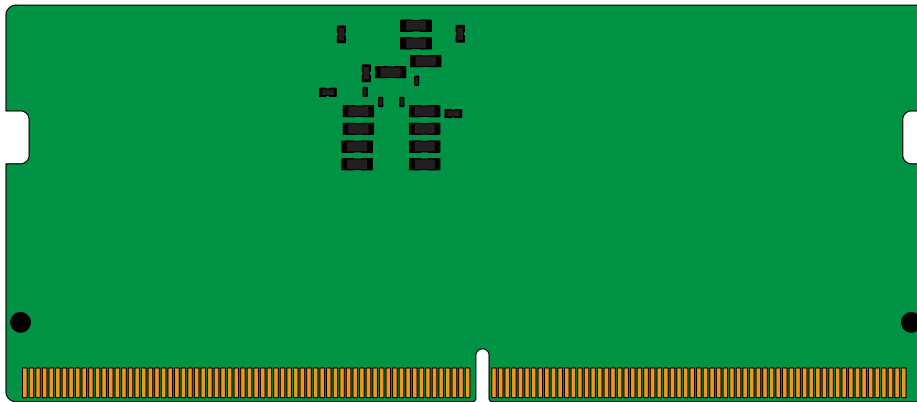
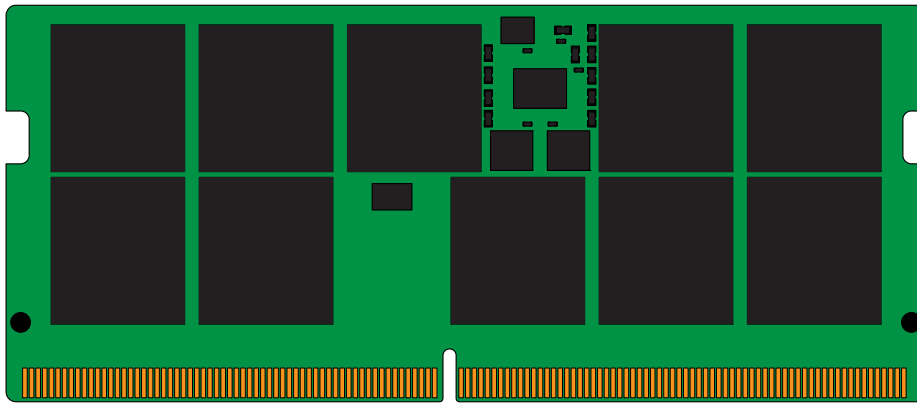
CL(IDD)	40 cycles
Row Cycle Time (tRCmin)	48ns(min.)
Refresh to Active/Refresh Command Time (tRFCmin)	295ns(min.)
Row Active Time (tRASmin)	32ns(min.)
Row Precharge Time (tRPmin)	16ns(min.)
UL Rating	94 V - 0
Operating Temperature	0° C to +95° C
Storage Temperature	-55° C to +100° C

### Module Assembly

<b>DRAM: HYNIX (M-DIE)</b>
----------------------------

Continued >>

## MODULE DIMENSIONS



The product images shown are for illustration purposes only and may not be an exact representation of the product.  
Kingston reserves the right to change any information at anytime without notice.

Revision No.	History	Release Date	Remark	Editor	Approved
A	Initial Release	9/15/2022		Kirk F.	Phong T.
B	Change measurements (pg2)	4/24/2023		David Yen	Phong T.

\*Products and specifications discussed herein are for evaluation and reference purposes only and are subject to change without notice. All information discussed herein is provided on an “as is” basis, without warranties of any kind.