

HX432S20IB2K2/32

32GB (16GB 2G x 64-Bit x 2 pcs.)
 DDR4-3200 CL20 260-Pin SODIMM Kit



SPECIFICATIONS

CL(IDD)	20 cycles
Row Cycle Time (tRCmin)	45.75ns (min.)
Refresh to Active/Refresh Command Time (tRFCmin)	350ns (min.)
Row Active Time (tRASmin)	26.25ns (min.)
UL Rating	94 V - 0
Operating Temperature	0°C to 85°C
Storage Temperature	-55°C to +100°C

DESCRIPTION

HyperX HX432S20IB2K2/32 is a kit of two 2G x 64-bit (16GB) DDR4-3200 CL20 SDRAM (Synchronous DRAM) 1Rx8, memory module, based on eight 2G x 8-bit DDR4 FBGA components. Each module supports Intel® Extreme Memory Profiles (Intel® XMP) 2.0. Total capacity is 32GB. This module has been tested to run at DDR4-3200 at a low latency timing of 20-22-22 at 1.2V. Additional timing parameters are shown in the PnP Timing Parameters section below. The JEDEC standard electrical and mechanical specifications are as follows:

Note: The PnP feature offers a range of speed and timing options to support the widest variety of processors and chipsets. Your maximum speed will be determined by your BIOS.

FEATURES

- Power Supply: VDD = 1.2V Typical
- VDDQ = 1.2V Typical
- VPP = 2.5V Typical
- VDDSPD = 2.2V to 3.6V
- On-Die termination (ODT)
- 16 internal banks; 4 groups of 4 banks each
- Bi-Directional Differential Data Strobe
- 8 bit pre-fetch
- Burst Length (BL) switch on-the-fly BL8 or BC4(Burst Chop)
- Height 1.18" (30.00mm)

PnP JEDEC TIMING PARAMETERS:

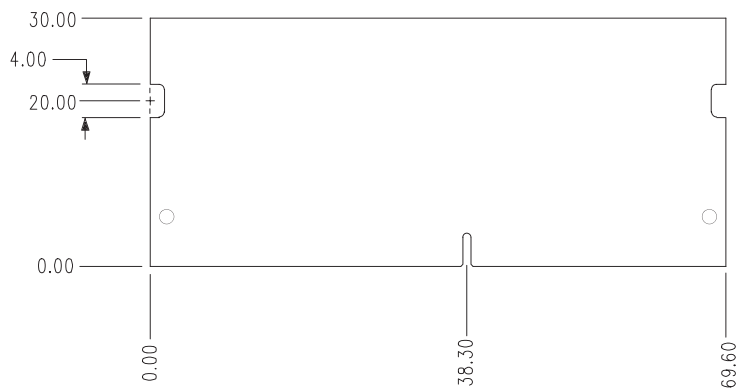
- JEDEC/PnP: DDR4-3200 CL20-22-22 @1.2V
- XMP Profile #1: DDR4-3200 CL20-22-22 @1.2V
- XMP Profile #2: DDR4-2933 CL17-19-19 @1.2V

Continued >>

MODULE DIMENSIONS



All measurements are in millimeters.
 (Tolerances on all dimensions are ± 0.12 unless otherwise specified)



The product images shown are for illustration purposes only and may not be an exact representation of the product. Kingston reserves the right to change any information at anytime without notice.

FOR MORE INFORMATION, GO TO HYPERXGAMING.COM

All Kingston products are tested to meet our published specifications. Some motherboards or system configurations may not operate at the published HyperX memory speeds and timing settings. Kingston does not recommend that any user attempt to run their computers faster than the published speed. Overclocking or modifying your system timing may result in damage to computer components.