

U3 QUICK START GUIDE

U3 DataTraveler smart drive

For hardware installation, please refer to the hardware installation instructions included with the U3™ DataTraveler® smart drive.

Supported Operating Systems: Windows 2000 (SP4) and Windows XP

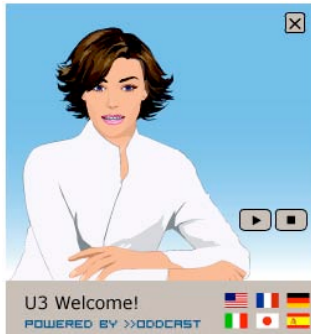


Figure 1

- After the hardware is successfully installed, an animated U3 Welcome will take you through a brief description of the U3 Launchpad. If you would like to disable this U3 Welcome, simply remove the check from the Start on Insertion option located under Manage U3 Programs.
- Once the animated U3 Welcome is complete, you can explore the U3 Launchpad.
- Click on the U3 icon located in the Taskbar to access the U3 Launchpad.



Figure 2

- The programs installed on your U3 DataTraveler smart drive will appear on the left side of the Launchpad.
- Click on an icon to access the selected application.
- You can also use the icons on the right side of the Launchpad to perform various tasks.
 - **Explore U3 Drive:** View the contents of the U3 DataTraveler smart drive in Windows Explorer.
 - **Manage U3 Programs:** Used to change the order of the applications displayed on the left side of the Launchpad. You can also program an application to auto-start as soon as the U3 DataTraveler smart drive is inserted into a USB port, or you can remove the application from the U3 Launchpad entirely.

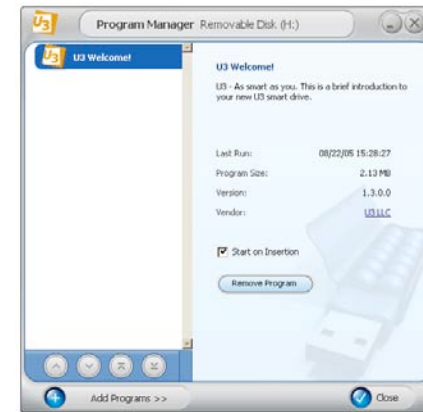


Figure 3

- **Status and Settings:** Here you can change the entire contents of the U3 Launchpad into a different language. The language options are German, Spanish, French, Italian, Japanese, and English (Default).
 - **Add Programs:** Connects you to the U3 Download Central where you can purchase the latest U3-compatible applications. If you have U3-compatible programs stored on your computer, you can also use this option to transfer these programs from your hard drive directly onto the U3 Launchpad.
- Note:** An Internet connection is required to download programs from the U3 Download Central.
- **Help and Support:** Contains detailed instructions about the U3 DataTraveler smart drive as well as a Get Support option,

which contains important contact information for product support.

- **Kingston U3 Center:** A resource center for Kingston product information.
- **Enable Security:** Used to enable or disable the password protection. When selected, the Enable Password Protection dialog box will display. Here you will need to create and reconfirm a password. A password hint is also available to assist you with remembering your password.

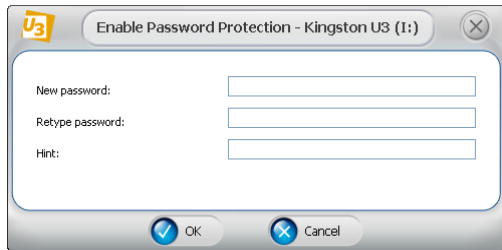


Figure 4



Note: When the maximum number of password attempts exceed a pre-configured value of 100, the U3 DataTraveler smart drive will lockdown. In such an event, the U3 DataTraveler smart drive must be reformatted in order to regain operation. **Please note:** When the U3 DataTraveler smart drive is reformatted, all of the data and applications on the U3 DataTraveler smart drive will be lost!



Figure 5

- The Download Programs option takes you directly to the U3 Download Central, where you can purchase the latest U3-compatible applications and download them directly to the U3 DataTraveler smart drive.
- The U3 DataTraveler smart drive is partitioned into two drives.
 - **Kingston U3:** Read-only partition containing U3 system files.
 - **Removable Disk:** Read/Write partition used to store your files and folders.
- Transferring files and folders to the U3 DataTraveler smart drive is a simple drag-and-drop operation. In order to access the Removable Disk drive, follow the instructions below.
 - Double-click on the My Computer utility
 - Drag and drop your files directly to the Removable Disk icon.

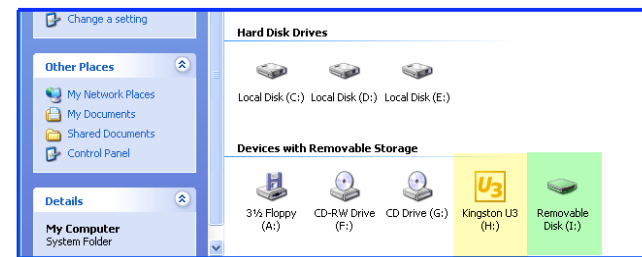


Figure 6

- When you are finished with your work, you can safely remove the U3 DataTraveler smart drive by clicking on the Eject button, located at the bottom right corner of the U3 Launchpad.



Figure 7