

KSM29RS8/16MER

16GB 1Rx8 2G x 72-Bit PC4-2933

CL21 Registered w/Parity 288-Pin DIMM

DESCRIPTION

Kingston's KSM29RS8/16MER is a 2G x 72-bit (16GB) DDR4-2933 CL21 SDRAM (Synchronous DRAM) registered w/ parity, 1Rx8, ECC, memory module, based on nine 2G x 8-bit FBGA components. The SPD is programmed to JEDEC standard latency DDR4-2933 timing of 21-21-21 at 1.2V. Each 288-pin DIMM uses gold contact fingers. The electrical and mechanical specifications are as follows:

FEATURES

- Power Supply: VDD = 1.2V
- VDDQ = 1.2V
- VPP = 2.5V
- VDDSPD = 2.41V to 2.75V
- Functionality and operations comply with the DDR4 SDRAM datasheet
- 16 internal banks
- Bank Grouping is applied, and CAS to CAS latency (tCCD_L, tCCD_S) for the banks in the same or different bank group accesses are available
- Data transfer rates: PC4-2933, PC4-2666, PC4-2400, PC4-2133, PC4-1866, PC4-1600
- Bi-Directional Differential Data Strobe
- 8 bit pre-fetch
- Burst Length (BL) switch on-the-fly BL8 or BC4(Burst Chop)
- Supports ECC error correction and detection
- On-Die Termination (ODT)
- Temperature sensor with integrated SPD
- This product is in compliance with the RoHS directive.
- Per DRAM Addressability is supported
- Internal Vref DQ level generation is available
- Write CRC is supported at all speed grades
- CA parity (Command/Address Parity) mode is supported

SPECIFICATIONS

CL(IDD)	21 cycles
Row Cycle Time (tRCmin)	46.32ns(min.)
Refresh to Active/Refresh Command Time (tRFCmin)	350ns(min.)
Row Active Time (tRASmin)	32ns(min.)
Maximum Operating Power	*
UL Rating	94 V - 0
Operating Temperature	0° C to +85° C
Storage Temperature	-55° C to +100° C

*See IDD Specifications (page 2)

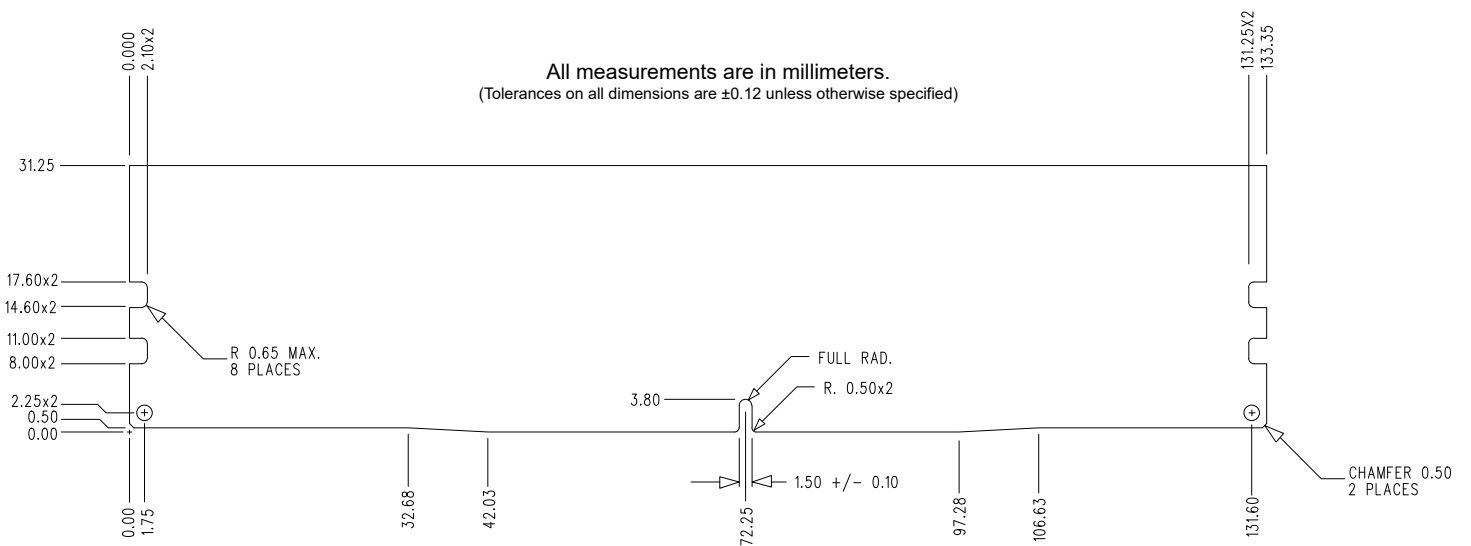
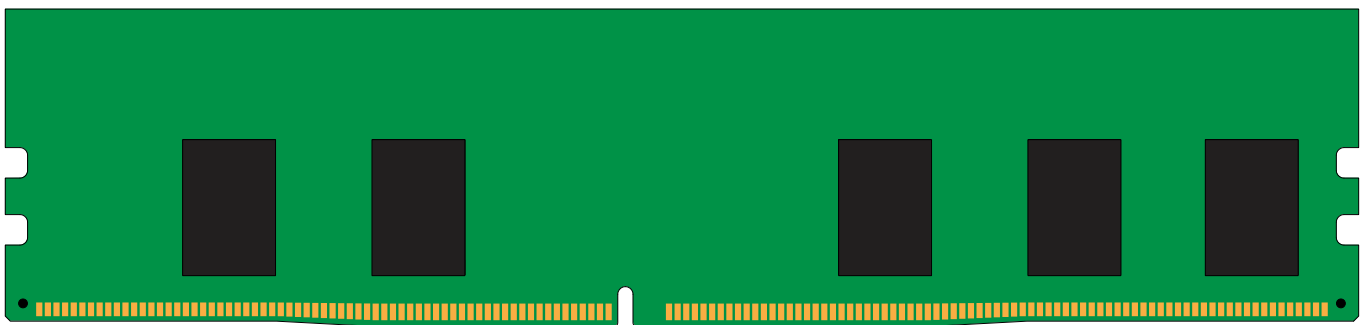
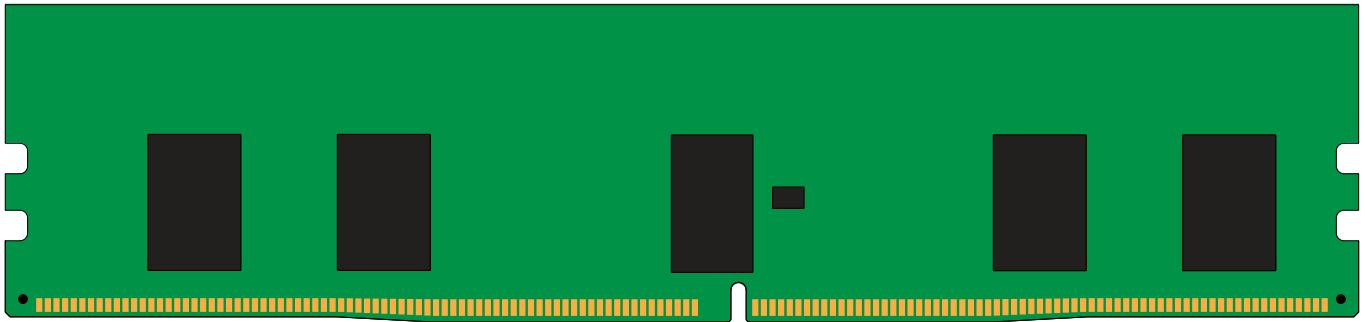
Module Assembly

DRAM: MICRON (E-DIE)
RCD: Rambus

IDD Specifications

Symbol	2933	Units
I_{DD0}^1	531	mA
I_{PP0}^1	27	mA
I_{DD1}^1	630	mA
I_{DD2N}^2	396	mA
I_{DD2NT}^1	450	mA
I_{DD2P}^2	342	mA
I_{DD2Q}^2	378	mA
I_{DD3N}^2	540	mA
I_{PP3N}^2	18	mA
I_{DD3P}^2	441	mA
I_{DD4R}^1	1386	mA
I_{DD4W}^1	1107	mA
I_{DD5R}^1	612	mA
I_{PP5R}^1	36	mA
I_{DD6N}^2	477	mA
I_{DD6E}^2	1017	mA
I_{DD6R}^2	180	mA
I_{DD6A}^2	99	mA
I_{DD6A}^2	180	mA
I_{DD6A}^2	459	mA
I_{DD6A}^2	1017	mA
I_{PP6X}^2	54	mA
I_{DD7}^1	1647	mA
I_{PP7}^1	72	mA
I_{DD8}^2	324	mA

MODULE DIMENSIONS



The product images shown are for illustration purposes only and may not be an exact representation of the product. Kingston reserves the right to change any information at anytime without notice.